

# DIGITALCOAST CONNECTIONS



January 2025

## New Data, New Resources

### Digital Coast – Your Coastal Information Resource

- **Story from the Field** – [Using Automated Methods to Update the National Wetlands Inventory in Louisiana.](#)
- **Story from the Field** – [Using High-Resolution Impervious Mapping for Florida's Statewide Flood Vulnerability Assessment.](#)
- **Tool** – [Tidal Analysis Datum Calculator.](#)
- **Data** – See the list of [new and updated data sets.](#)

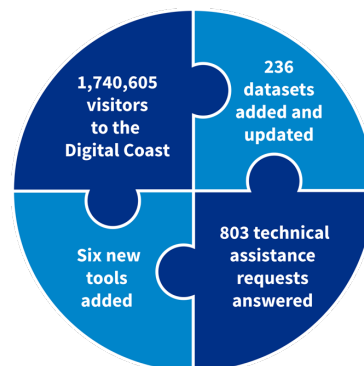
### Office for Coastal Management

- Explore the complete [list of state impact stories](#) and use them in your communication efforts. The most recent stories are at the top.

## 2024 Wrapped

### Data, Tools, and Technical Assistance

- **1,740,605 visitors to the Digital Coast** – Visitors explored [3,416 datasets](#), [86 tools](#), [169 training resources](#), and [125 stories from the field.](#)
- **236 datasets added and updated** – This includes the much anticipated [high-resolution land cover data](#) and [Economics: National Ocean Watch data](#) for the U.S. territories.



- **Six new tools added** – At the top of this list is the brand new [Sea Level Calculator](#) created in partnership with [NOAA's Center for Operational Oceanographic Products and Services](#).
- **803 responses to technical assistance requests** – From helping users with data download issues to sharing the code for popular tools, if you have a question, reach out to [coastal.info@noaa.gov](mailto:coastal.info@noaa.gov) and we'll get it answered.

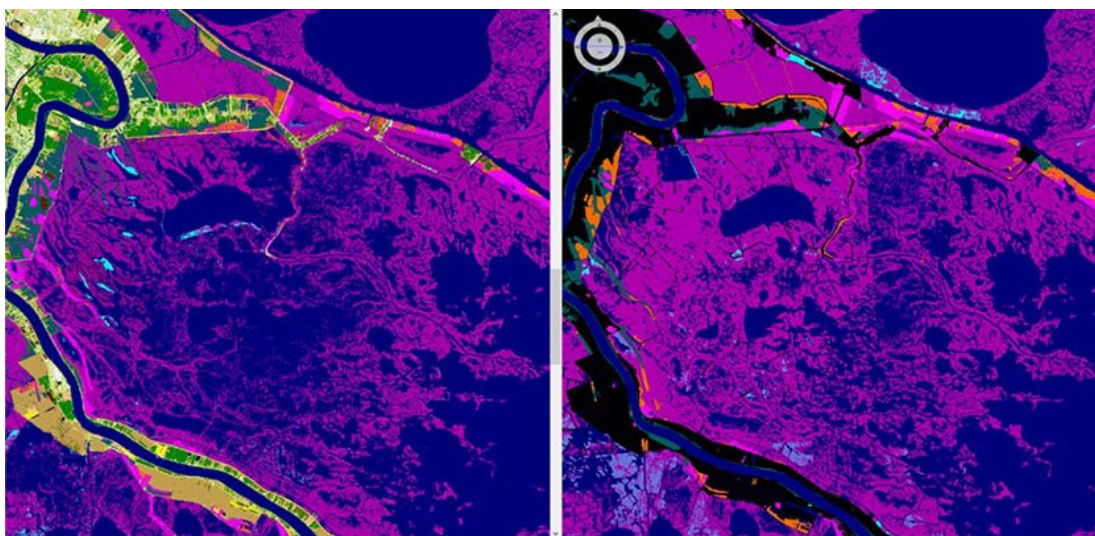
## Tech Topics

### Navigate the Digital Coast Toolbox with Guided Search

With so many tools on the Digital Coast, it can be hard to figure out which tool fits your project needs. Thankfully, the guided search has you covered. On the [Digital Coast's tools page](#), scroll down to “Finding the right tool for the job” and answer a few questions to narrow down your options. Cut through the noise to find exactly what you need for your chosen geography, topic area, and application preferences.

Still having trouble? Reach out to us at [coastal.info@noaa.gov](mailto:coastal.info@noaa.gov).

## Stories from Your Peers



### Using Automated Methods to Update the National Wetland Inventory

The nation's most comprehensive wetland inventory can be costly to maintain, leaving large areas decades out of date. Researchers developed automated techniques to identify changes in wetlands by comparing the wetland inventory maps with NOAA's new high-resolution land cover data. Using New Orleans, Louisiana, as a pilot site, the team provided more accurate information to update the existing inventory. This approach is faster and more cost-effective than previous methods.

- To learn more, read the [full story here](#).

## Tips from the Digital Coast Academy

### Plan Ahead for Marsh Migration

There are many factors to consider when it comes to sea level rise. Take the marsh, for instance. Where will these wetlands go? Will they move inland? Will they disappear? Luckily, there are ways to make an educated guess.

An important factor is the accretion rate. Accretion is what happens when sediments are delivered to and then trapped within marshes, causing a gradual growth or increase in ground height. See this [tutorial about marsh migration](#) on the Sea Level Rise Viewer to learn more.

## Fast Facts

# Wetland Benefits

\$625 million in damages prevented.



*Information provided by The Nature Conservancy*

*This is just one of the many coastal management [fast facts and graphics](#) provided for your use. [Read the list](#) and let us know if there are others you'd like to see added.*

